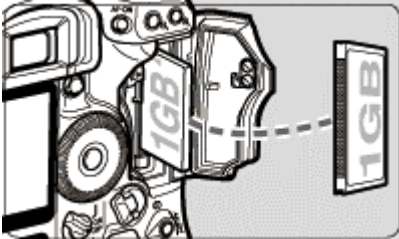


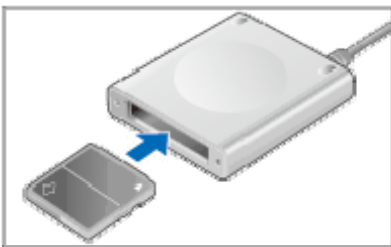
EOS-1Ds Mark III Firmware Update Instructions

Firmware is software that is embedded in a hardware device to control it. The firmware in the EOS-1Ds Mark III controls shooting and processing of images. The following instructions are based on the assumption that the latest version of the firmware has been downloaded to your computer. A card reader capable of writing data to a memory card is also required.



1 Format the memory card with the camera.

- Insert the memory card into the camera, and then execute "Format" on the menu.
- Make sure that there is nothing you need to keep in the memory card beforehand.
- You can either use a CF card or a SD memory card.

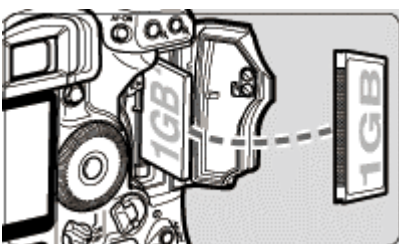


2 Insert the memory card into the card reader.

- After making sure that the card reader is usable, insert a memory card into the card reader.

3 Copy the firmware to the memory card.

- Copy the firmware "1DS3xxxx.FIR" saved on the computer's hardware to the location that appears right after opening the memory card (the root directory). (xxxx is the version number.)
- Do not use the firmware into a folder in the memory card. The camera cannot locate the firmware if it is saved in one of the folders of the memory card.

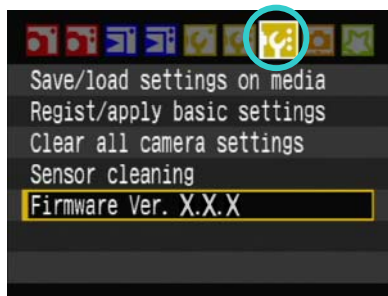


4 Insert the memory card containing the firmware into the camera.

- Close the memory card slot cover, and turn the power switch <ON>.

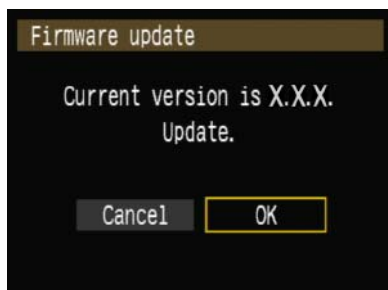
<Cautions>

- A DC coupler is recommended for supplying power to the camera during the firmware update.
- If you are using a battery to supply power to the camera, make sure that it has sufficient charge.
- If a problem occurs after firmware update has started (in Step 8), the camera becomes unusable until the update is completed properly. Therefore, be sure to observe these instructions.



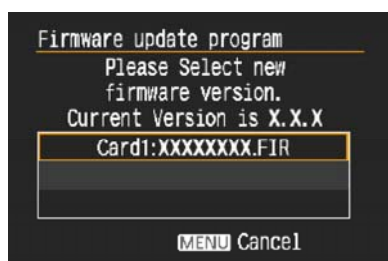
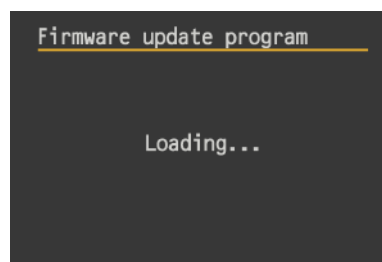
5 On the menu, select “Firmware”.

1. Press the <MENU> button.
2. Turn the Main Dial to select [Set-up 3] menu.
3. Turn the Quick Control Dial to select “Firmware”, and then press the <SET> button.



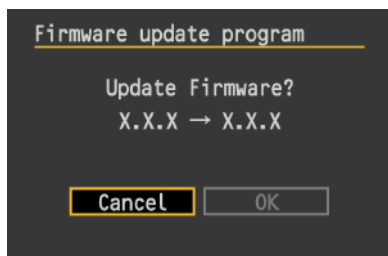
6 Select “OK”.

- Turn the Quick Control Dial to select “OK”, and press the <SET> button.
- > Version check of the firmware in memory card starts.



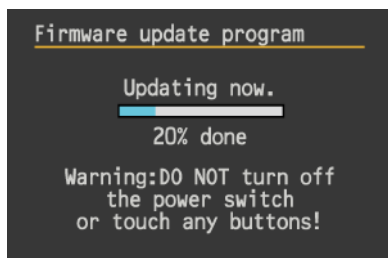
7 Select the “Firmware”.

- Turn the Quick Control Dial to select the firmware to be updated. Then press the <SET> button.

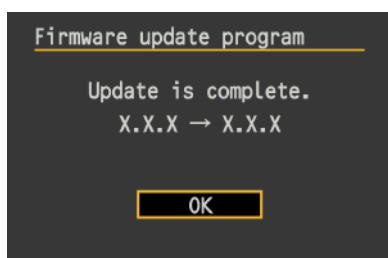


8 Start the firmware update.

- Turn the Quick Control Dial to select “OK”, and press the <SET> button.
- > Firmware update starts.



- Do not touch any button on the camera until the update is complete.
- If a problem occurs after the update has started, refer to the instructions on page 3 of this manual.

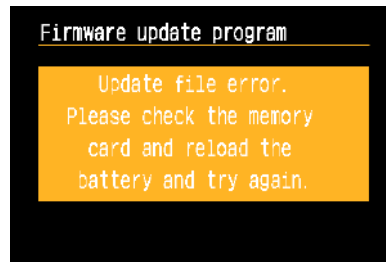


9 Finish the firmware update.

- Press the <SET> button.
- > The firmware update is complete and the camera is ready for shooting.

If an error message appears after the update has started:

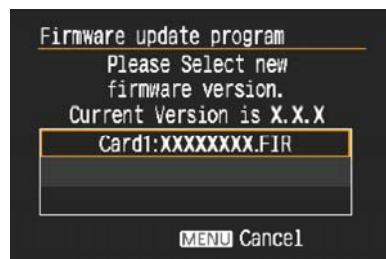
1. Press the <SET> button.



- If the LCD monitor turns off, download the firmware again, and start the update procedure from Step 1.
- If the LCD monitor changes its display to the screen below, go to Step 2 below.



2. Repeat the update procedure from Step 7.



In case the problem remains unsolved after the above steps are taken, follow the steps below.

1. Turn the power switch to <OFF>.
2. Download the firmware once again and decompress it.
3. Copy the decompressed firmware "1DS3xxxx.FIR" to the memory card.
4. Insert the memory card into the camera and turn the power switch to <ON>. The screen in Step 7 appears.
5. Take the update procedure from Step 7.